



FOR LEASE

2 SPACES AT CORNERSTONE SQUARE

6 CORNERSTONE SQUARE: 3,100 SF NEXT TO MARKET BASKET

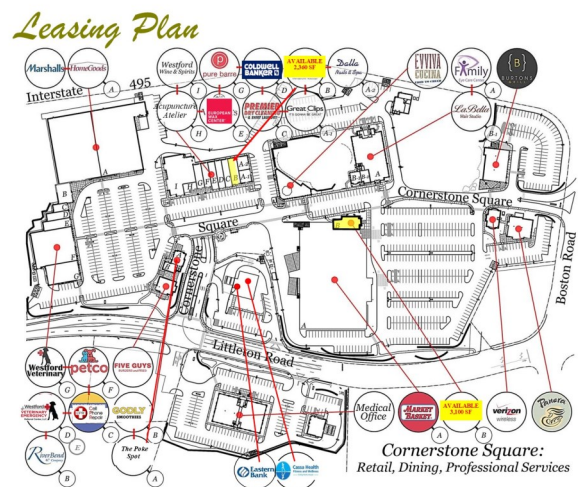
9 CORNERSTONE SQUARE: 2,360 SF NEXT TO GREAT CLIPS

Boston Rd., Rt. 110 (Littleton Rd.), Westford, MA at I-495 Exit 83

FEATURES:

- **AVAILABLE:** 3,100 SF and 2,360 SF Retail/Office Spaces
- **ANCHORS:** Market Basket, Marshall's, Home Goods, Panera, Petco, Evviva Trattoria
- **GLA:** 238,410 SF on 31 Acres
- **ADT:** 100,000+
- **LOCAL EMPLOYERS:** Kadant, Inc., Net Scout Systems, Ribbon Communications Inc., Westford Regency Inn & Conference Center, many more

Demographics:	3 Miles	5 Miles	10 Miles
Median HH Income	\$157,334	\$142,027	\$106,326
Population	23,292	67,888	377,043

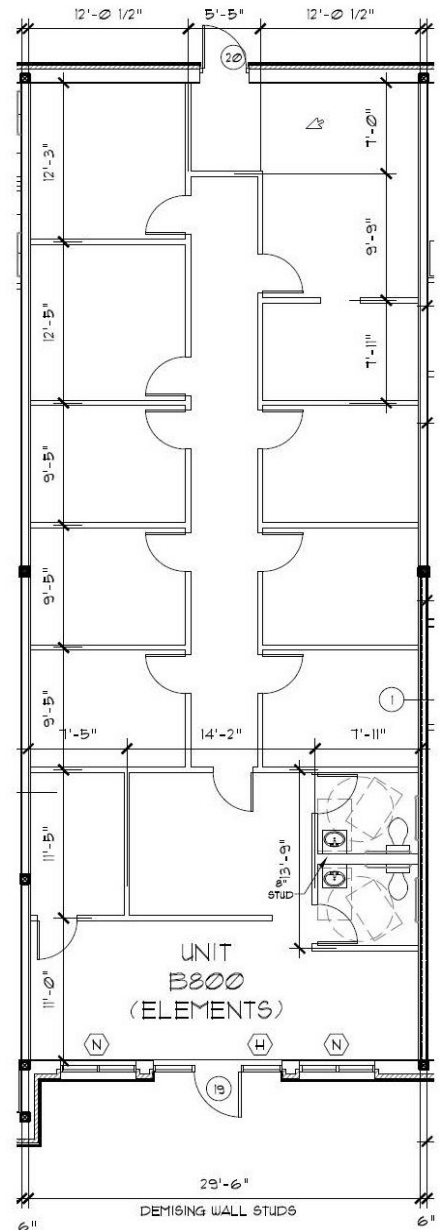


AMERICAN COMMERCIAL REAL ESTATE
 50 LEDGEVIEW WAY #2415, WRENTHAM, MASSACHUSETTS 02093
 TEL: (508) 735-6378 | FAX: (508) 861-0537 | E-MAIL: dusty@acreco.com | www.acreco.com



FOR LEASE

2,360 SF RETAIL/OFFICE SPACE AVAILABLE
9 CORNERSTONE SQ., WESTFORD, MA

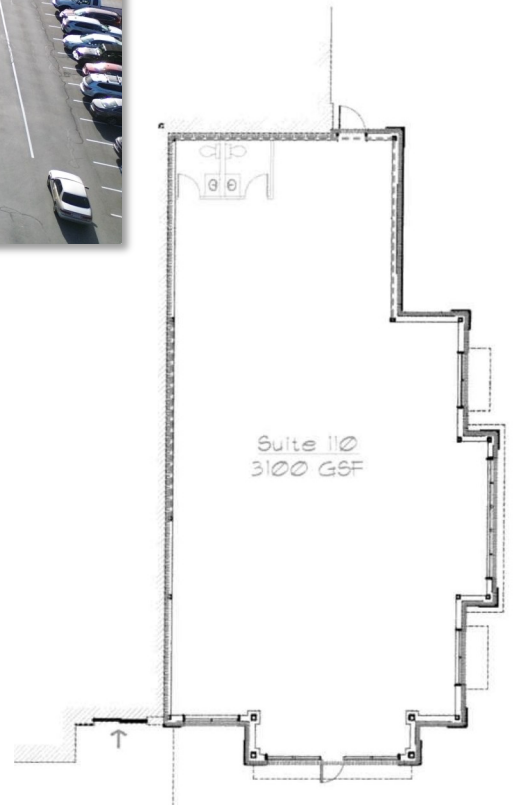


AMERICAN COMMERCIAL REAL ESTATE
50 LEDGEVIEW WAY #2415, WRENTHAM, MASSACHUSETTS 02093
TEL: (508) 735-6378 | FAX: (508) 861-0537 | E-MAIL: dusty@acresco.com | www.acresco.com



FOR LEASE

3,100 SF RETAIL/OFFICE SPACE AVAILABLE 6 CORNERSTONE SQ., WESTFORD, MA



CONTACT US:



Dusty Burke
508-735-6378
dusty@acreco.com



Dusty Burke III
508-735-5976
dusty3@acreco.com



AMERICAN COMMERCIAL REAL ESTATE
50 LEDGEVIEW WAY #2415, WRENTHAM, MASSACHUSETTS 02093
TEL: (508) 735-6378 | FAX: (508) 861-0537 | E-MAIL: dusty@acreco.com | www.acreco.com