

New Construction Retail Available

Cobb's Corner Across From Village Shoppes

106-123 Sharon St., Stoughton, MA

1,350 SF Next to Dunkin Donuts



Highlights

- New Construction
- Join Jersey Mike's and Dunkin' Donuts
- High Visibility
- Heavy Traffic - Washington St: 20,000+ ADT
- Immediately Across From : Shaw's, McDonalds, Five Guys, Marshalls, Dunkin, Starbucks, Mobil, Rocky's Ace Hardware, Chase Bank, and more
- 27 Surface Parking Spaces
- Public Water Sewer, and Natural Gas On-site



For Lease

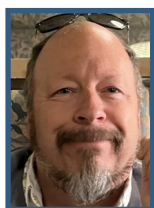
Cobb's Corner

106-123 Sharon St. | Stoughton, MA



2024 Demographics	1 Miles	3 Miles	5 Miles
Estimated Population	8,807	51,731	118,429
Estimated Households	3,908	20,122	45,289
Estimated Average Household Income	\$131,071	\$155,759	\$154,141

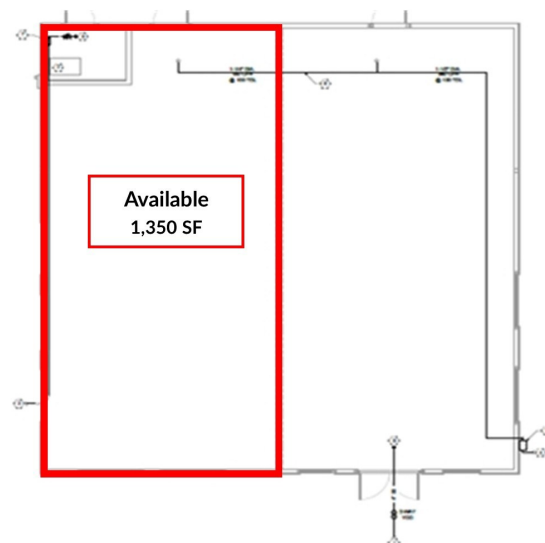
Contact



Bobby Burke

508-479-5294

bobby.acreco@gmail.com



American Commercial Real Estate

50 Ledgeview Way #2415, Wrentham, Massachusetts 02093

Tel: (508) 735-6378 | E-mail: dusty@acreco.com | www.acreco.com