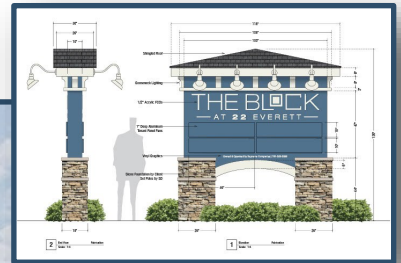


THE BLOCK At Westwood

New Construction Retail Space

7,047 SF, Dividable to 1,500 SF, For Lease

22 Everett St., Westwood, MA, Off I-95, Rt. 1 and Rt. 1A



Highlights

- Concept: New multi-family/retail center of 99 residential units & 11,247 SF first floor retail
- In the heart of Westwood's commercial region
- Under construction now
- Outstanding parking and access, including EV parking
- Developer: Supreme Companies
- Westwood average house-hold income: \$255,000
- Delivery: October 2025
- Traffic: Everett St - 17,000 ADT

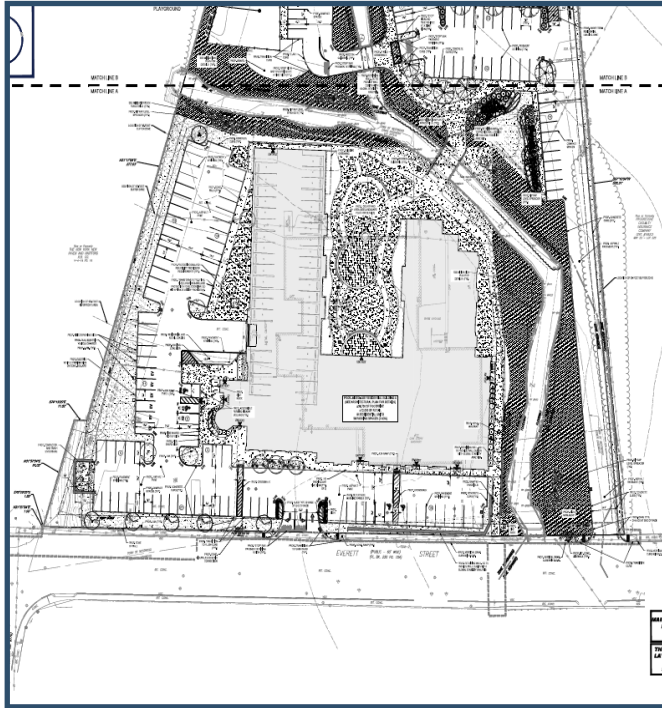


For Lease

THE BLOCK at Westwood

22 Everett St. | Westwood, MA

Site Plan



2024 Demographics	1 Mile	3 Miles	5 Miles
Estimated Population	6,283	59,410	155,462
Estimated Households	2,303	22,831	58,586
Estimated Daytime Employees	4,846	43,891	89,217
Estimated Average Household Income	\$148,724	\$149,218	\$149,770

- Traffic: Everett St. - 17,000 ADT
Rt. 1 - 50,000+ ADT

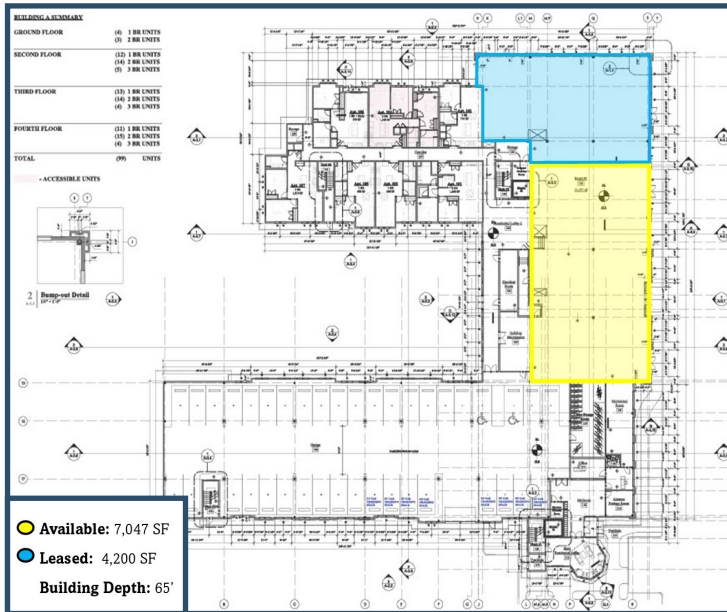


For Lease

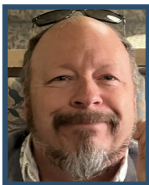
THE BLOCK at Westwood

22 Everett St. | Westwood, MA

Floor Plan



Contact Us



Bobby Burke

508-479-5294

bobby.acreco@gmail.com



Dusty Burke

508-735-6378

dusty@acreco.com

American Commercial Real Estate

50 Ledgeview Way #2415, Wrentham, Massachusetts 02093

Tel: (508) 735-6378 | E-mail: dusty@acreco.com | www.acreco.com