

Donelan's Shopping Center

In the Heart of the I-495 High-Tech Market

224-240 Great Rd., (Rt. 2A & 119) Littleton, MA

- 39,213 SF Shopping Center on 5 Acres with Immediate Opportunity for up to 37,000 SF Retail
- High-Profile Location 1/2 Mile from I-495, 1/3 Mile from Littleton Common and Rt. 110/2A/119 Intersection
- Tenants: Donelan's Super Market (36,713 SF) & Bubble & Polish Nail Spa (2,500 SF)
- 370' Frontage on Great Road
- Town Water, Private Septic, Natural Gas, Electricity (800 Amp), Telephone, HVAC Roof-Top Gas-Fired
- 125 Parking Spaces
- Traffic: Great Rd - 17,000 ADT | I-495 - 117,000 ADT
- Property is Not Being Publicly Broadcast For Sale, Invitees Only



Donelan's Shopping Center

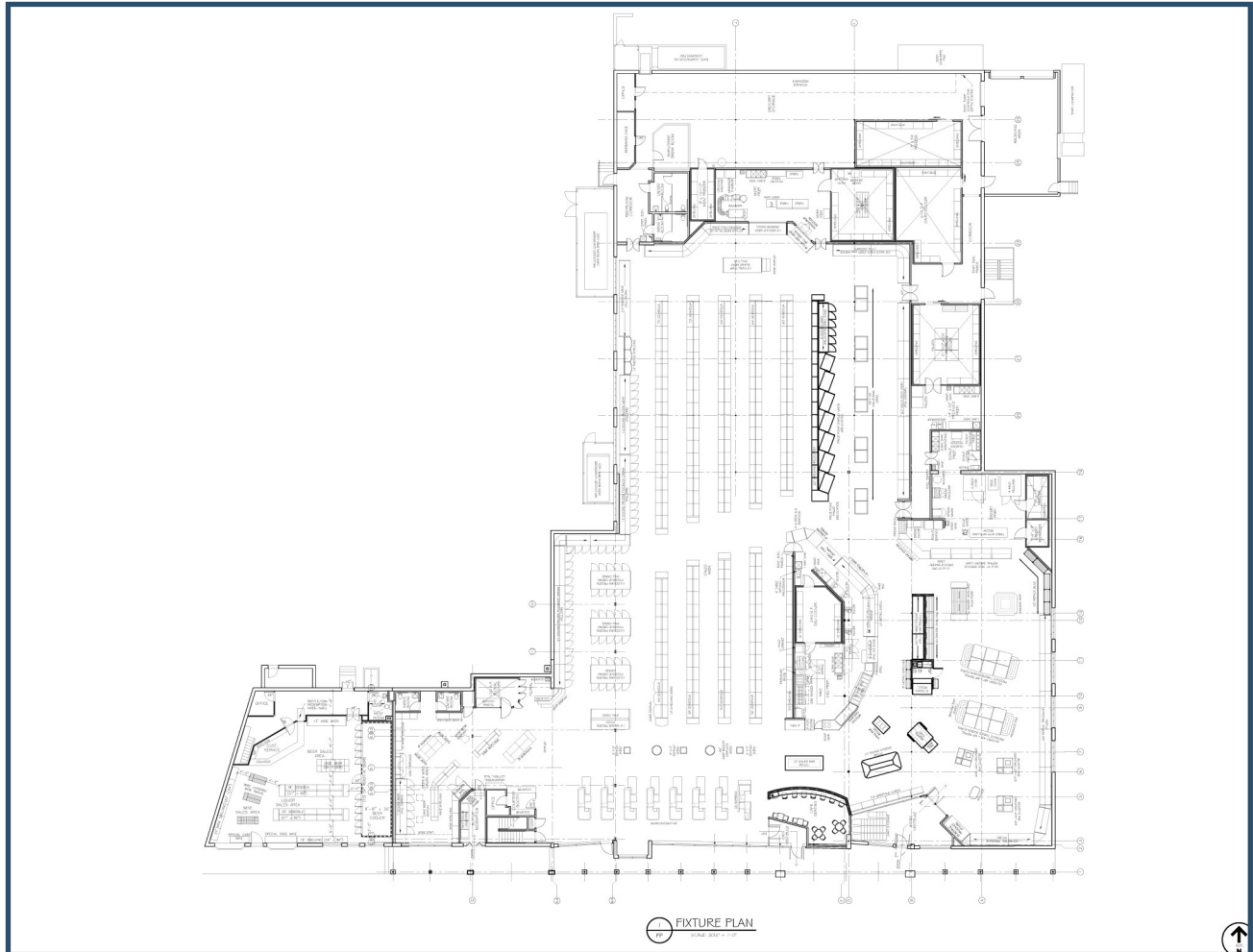
224-240 Great Road | Littleton, MA



2024 Demographics	3 Miles	5 Miles	10 Miles
Estimated Population	19,484	57,452	263,168
Estimated Households	7,206	21,180	95,911
Estimated Daytime Employees	13,849	28,944	126,034
Estimated Average Household Income	\$171,946	\$174,072	\$155,978

Donelan's Shopping Center

224-240 Great Road | Littleton, MA



Contact Us



Dusty Burke | 508-735-6378 | dusty@acreco.com



Dusty Burke, III | 508-735-5976 | dusty3@acreco.com

American Commercial Real Estate

50 Ledgeview Way #2415, Wrentham, Massachusetts 02093

Tel: (508) 735-6378 | E-mail: dusty@acreco.com | www.acreco.com