

# Cornerstone Square

*Next to Market Basket*

*3,100 SF and 2,360 SF Available*

*I-495, Boston Rd and Littleton Rd (At Rt. 110)*

*Westford, MA*

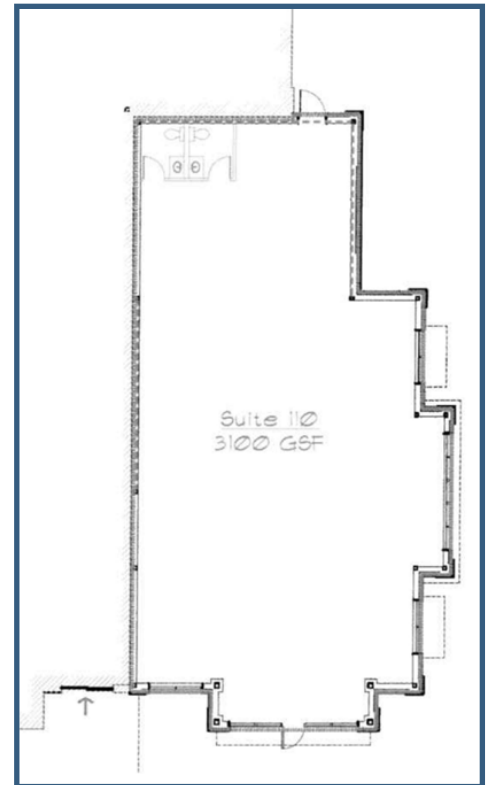
- Cornerstone Square defines regional retail excellence at I-495, exit 83, with unmatched visibility, premier access and proven market presence
- Anchors: Market Basket, Marshall's, Home Goods, Petco, Panera Bread & Evviva Trattoria
- GLA: 238,410 SF on 31 Acres
- Average household income: \$175,000 + (5 Miles)
- 4,000' of frontage
- Ample parking
- Traffic count: 200,000+ ADT





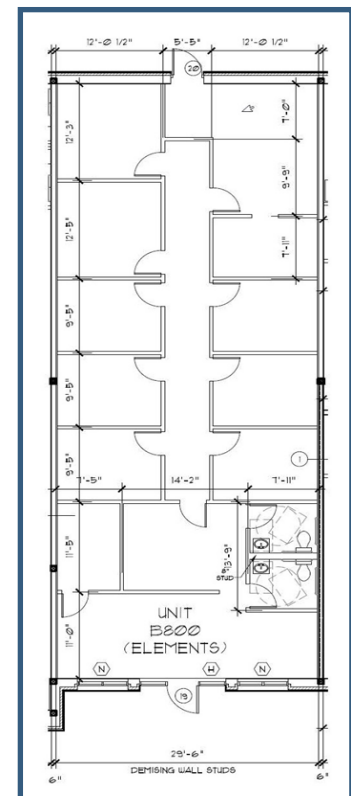
## 6 Cornerstone Square

- Suite 110
- Former Xfinity Retail Store
- 3,100 SF Retail Space
- Next to Market Basket
- Endcap



## 9 Cornerstone Square

- Suite B800
- Former Elements Massage
- 2,360 SF Retail Space
- Next to Great Clips





## Cornerstone Square

Boston Rd., Littleton Rd. (Rt. 110) | Westford, MA

### Site Plan



### Tenants

|                                 |                           |                           |
|---------------------------------|---------------------------|---------------------------|
| Marshalls                       | Great Clips               | Eye Level Learning Center |
| Home Goods                      | <b>2,360 SF AVAILABLE</b> | Family Eye Care Center    |
| Riverbend & Company             | Premier Cleaners          | Burton's Grill            |
| Zagg Electronics                | Coldwell Banker           | Panera Bread              |
| Westford Veterinary Specialists | European Wax              | Verizon Wireless          |
| Petco                           | UPS                       | <b>3,100 SF AVAILABLE</b> |
| Westford Veterinary Emergency   | Pure Barre                | Market Basket             |
| Oki Poke                        | Acupuncture Atelier       | Eastern Bank              |
| Godly Smoothies                 | Westford Wine & Spirits   | Well Being Fitness        |
| Five Guys                       | Evviva Trattoria          |                           |
| Dalla Nail & Spa                | La Bella Hair Studio      |                           |



## Cornerstone Square

Boston Rd., Littleton Rd. (Rt. 110) | Westford, MA



| 2024 Demographics            | 3 Miles   | 5 Miles   | 10 Miles  |
|------------------------------|-----------|-----------|-----------|
| Estimated Population         | 24,110    | 69,842    | 376,688   |
| Estimated Households         | 8,768     | 25,811    | 139,373   |
| Estimated Daytime Employment | 14,666    | 28,166    | 179,415   |
| Estimated Average HH Income  | \$175,089 | \$170,276 | \$136,663 |

## Contact Us



Dusty Burke | 508-735-6378 | [dusty@acreco.com](mailto:dusty@acreco.com)



Dusty Burke, III | 508-735-5976 | [dusty3@acreco.com](mailto:dusty3@acreco.com)

### American Commercial Real Estate

50 Ledgeview Way #2415, Wrentham, Massachusetts 02093

Tel: (508) 735-6378 | E-mail: [dusty@acreco.com](mailto:dusty@acreco.com) | [www.acreco.com](http://www.acreco.com)