

# Primrose Plaza

*Direct Access At Rt. 110 and I-495 Exit 14*

*116 Chelmsford St., Chelmsford, MA*

*2,689 SF, Dividable, Next to 110 Grill*



## Highlights

- Join Primrose Plaza: 24,000 SF shopping center
- Tenants: 110 Grill, White Nails Salon, Berkshire Federal Bank, Primrose Carwash, KJ's Café, Dominos Pizza and Great Hill Dental Partners
- Dramatic presence on Rt. 110 at I-495 interchange
- Opposite one of Massachusetts' highest volume Dunkin Donuts
- Nearby retail/hospitality includes Mobil, Jimmy's Pizza, Charles Frederick Jewelers, Holiday Inn Express, Walgreens, USPS and more
- Prominent signage
- High traffic: Chelmsford St. - 25,000+ ADT
- 96 parking spaces



## Primrose Plaza Retail Space

116 Chelmsford St. | Chelmsford, MA

### Retail Market

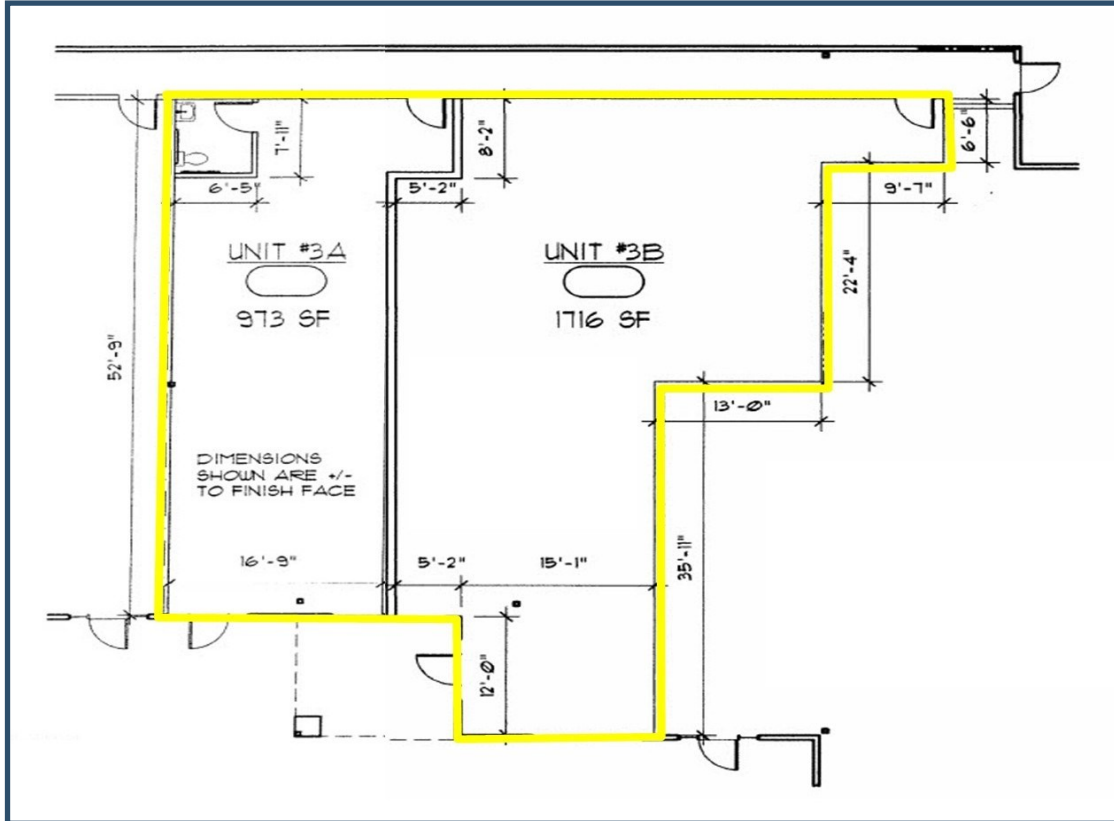


2024 Demographics	1 Mile	3 Miles	5 Miles	10 Miles
Estimated Population	6,619	77,863	192,054	422,999
Estimated Households	2,641	27,515	70,123	154,670
Estimated Daytime Employees	5,530	36,774	83,462	223,117
Estimated Average Household Income	\$146,248	\$120,735	\$111,860	\$135,727

## Primrose Plaza Retail Space

116 Chelmsford St. | Chelmsford, MA

### Floor Plan



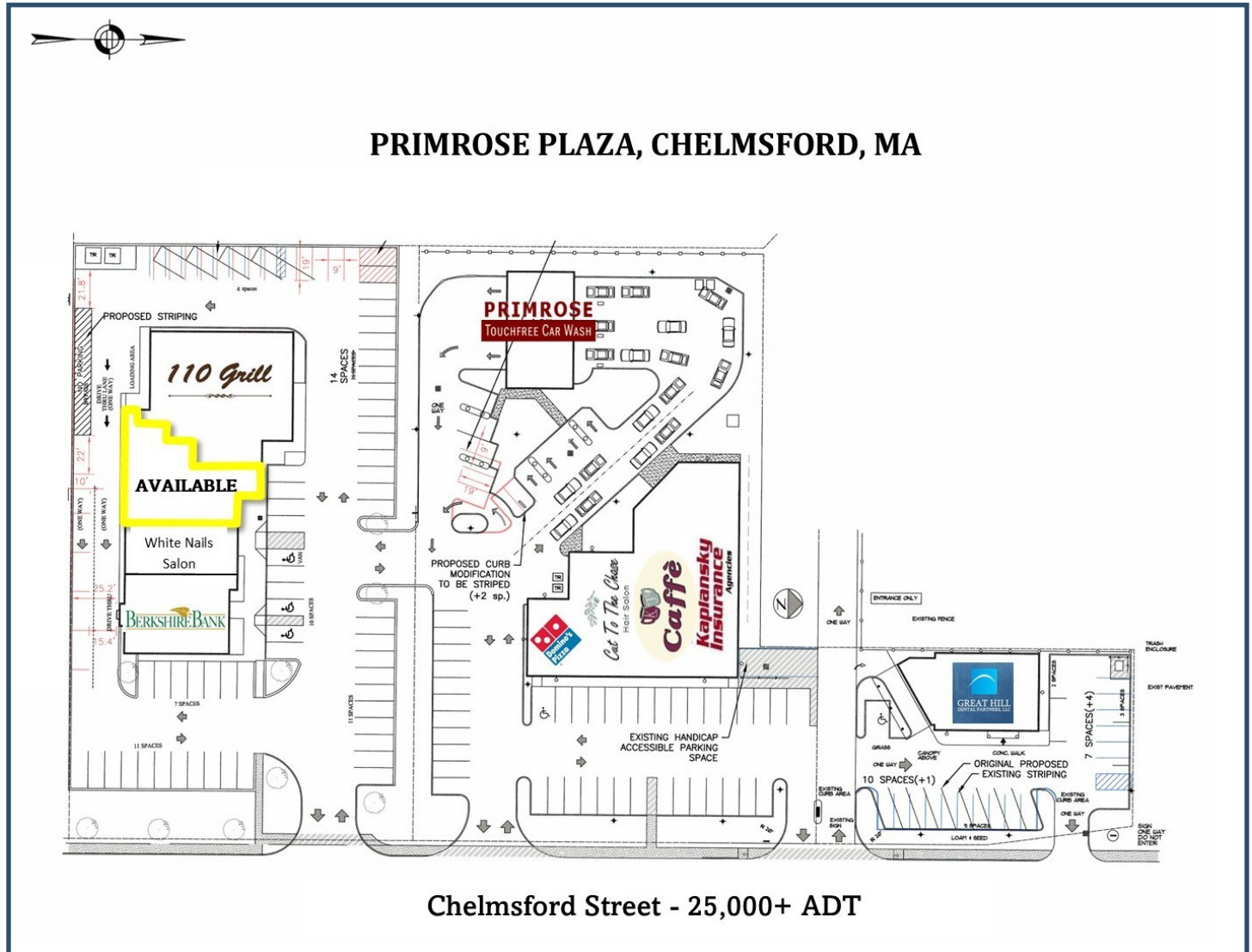




For Lease

## Primrose Plaza Retail Space

116 Chelmsford St. | Chelmsford, MA



## Contact Us



Dusty Burke, III

508-735-5976

[dusty3@acreco.com](mailto:dusty3@acreco.com)



Dusty Burke

508-735-6378

[dusty@acreco.com](mailto:dusty@acreco.com)

### American Commercial Real Estate

50 Ledgeview Way #2415, Wrentham, Massachusetts 02093

Tel: (508) 735-6378 | E-mail: [dusty@acreco.com](mailto:dusty@acreco.com) | [www.acreco.com](http://www.acreco.com)