

# Cornerstone Square

*Dominant Retail Center Anchored by Market Basket*

*3,100 SF | 2,360 SF Available*

*I-495 (Exit 83) & Route 110*

*Westford, Massachusetts*

- Leading regional retail center at I-495 (Exit 83) with exceptional visibility, access, and market presence
- Anchored by Market Basket, Marshalls, HomeGoods, Petco, Panera Bread, and Evviva Trattoria
- 238,410 SF GLA on 31 acres
- Average household income: \$175,000+ (5-Mile)
- 4,000' of frontage along Route 110 and Boston Road
- Ample parking
- Traffic counts: 200,000+ ADT

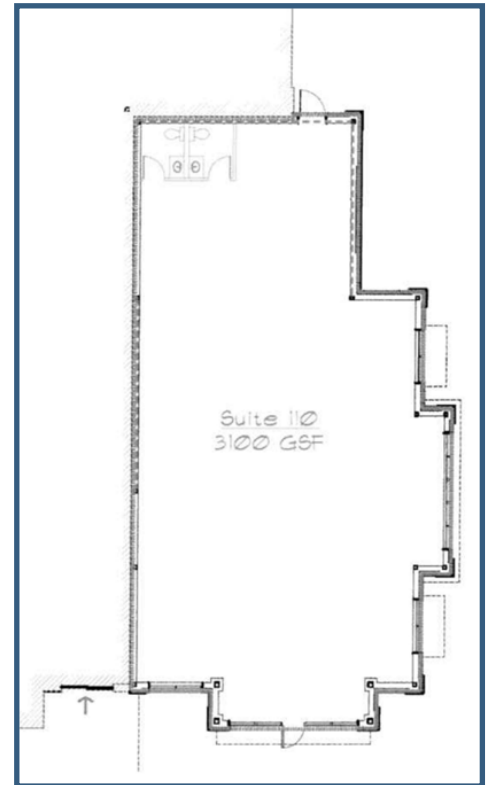


## 6 Cornerstone Square

Suite 110 (Endcap)

3,100 SF Retail Space

- Former Xfinity retail store
- Directly adjacent to Market Basket
- Prominent endcap visibility

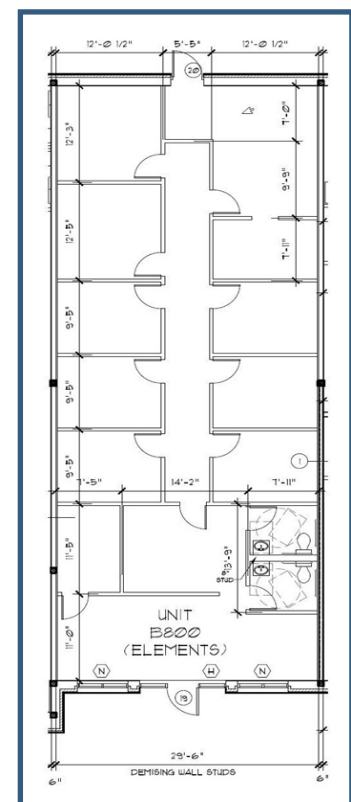


## 9 Cornerstone Square

Suite B800

2,360 SF Retail Space

- Former Elements Massage
- Adjacent to Great Clips
- Strong co-tenancy and foot traffic



# Cornerstone Square

Boston Rd. & Littleton Rd. (Rt. 110) | Westford, MA

## Site Plan



**Available Spaces:**

3,100 SF (Suite 110 Endcap)

2,360 SF (Suite B800)

**National and Regional Tenants:**

Marshalls

HomeGoods

Riverbend & Company

Zagg Electronics

Westford Veterinary Specialists

Petco

Westford Veterinary Emergency

Oki Poke

Godly Smoothies

Five Guys

Dalla Nail & Spa

Great Clips

Premier Cleaners

Coldwell Banker

European Wax

UPS

Pure Barre

Acupuncture Atelier

Westford Wine & Spirits

Evviva Trattoria

La Bella Hair Studio

Eye Level Learning Center

Family Eye Care Center

Burton's Grill

Panera Bread

Verizon Wireless

Market Basket

Eastern Bank

Well Being Fitness

# Cornerstone Square

Boston Rd. & Littleton Rd. (Rt. 110) | Westford, MA



2025 Demographics	3-Mile	5-Mile	10-Mile
Estimated population	25,306	73,039	392,840
Estimated households	9,199	27,005	145,358
Estimated average household income	\$186,553	\$181,229	\$148,679

## Contact Us



Dusty Burke

508-735-6378 | [dusty@acreco.com](mailto:dusty@acreco.com)



Dusty Burke III

508-735-5976 | [dusty3@acreco.com](mailto:dusty3@acreco.com)

### American Commercial Real Estate

50 Ledgeview Way #2415, Wrentham, Massachusetts 02093  
 Tel: (508) 735-6378 | Email: [dusty@acreco.com](mailto:dusty@acreco.com) | [www.acreco.com](http://www.acreco.com)